

Diagram 1

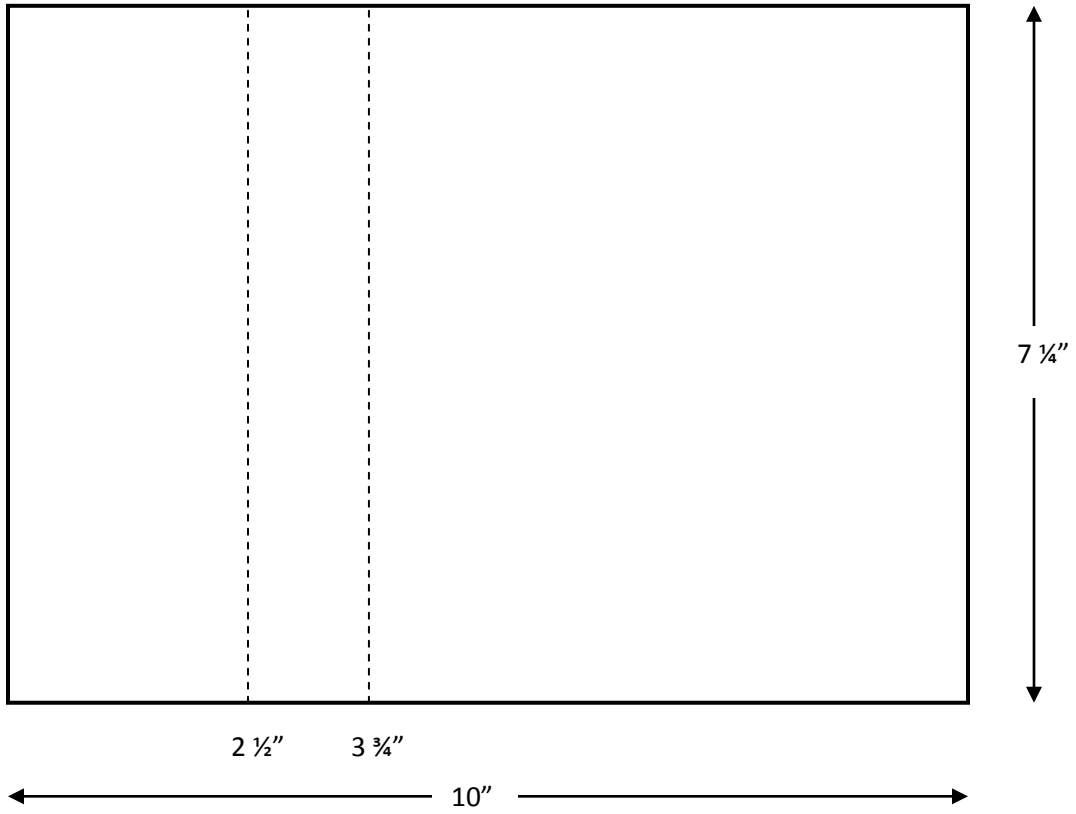


Diagram 2

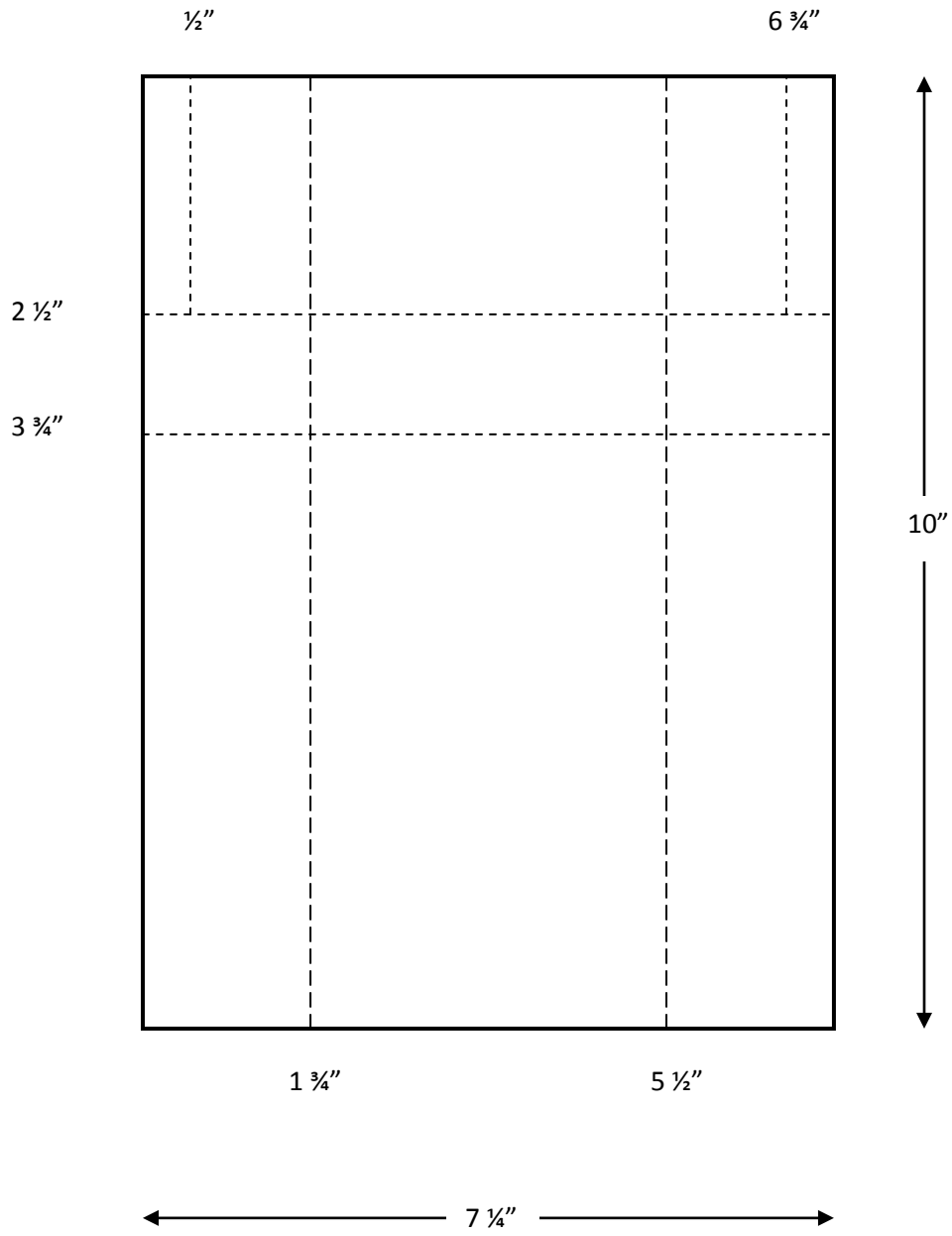


Diagram 3

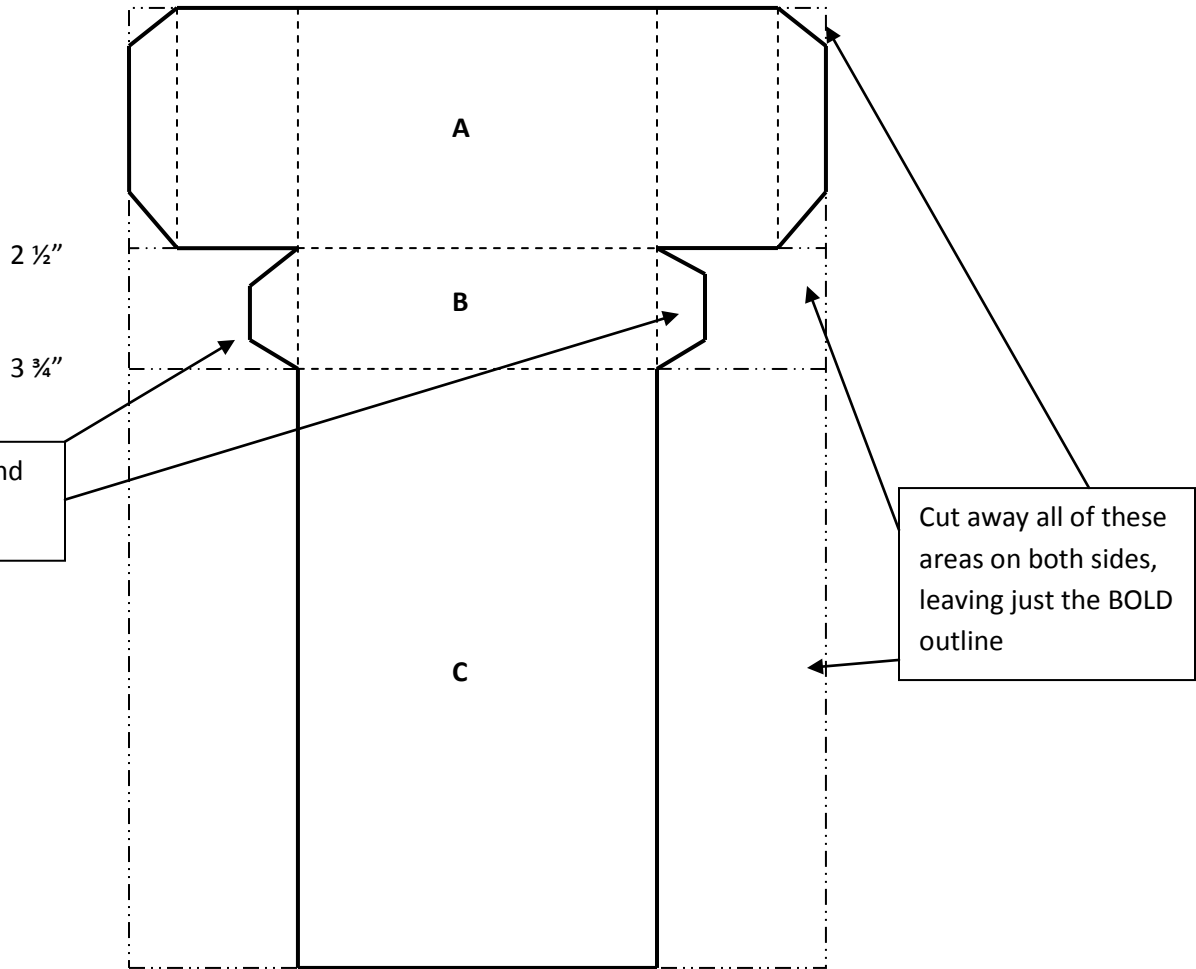
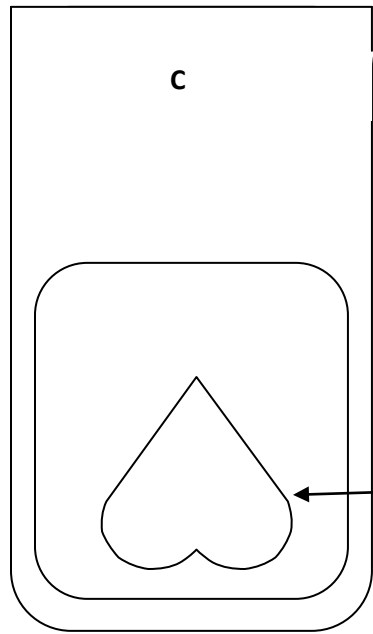


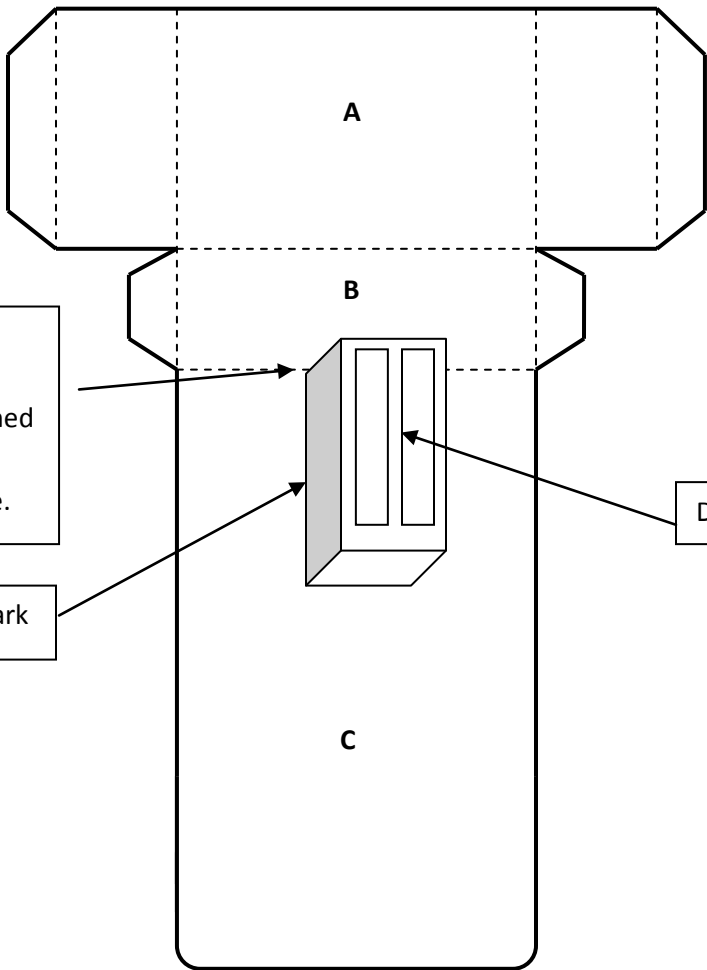
Diagram 4

**NOTE:** Diagram is just showing Section C.



Trace and cut out heart through both layers.

Diagram 5



Bottom opening of tube is aligned at the 3 <sup>3</sup>/<sub>4</sub>" creased line.

1 <sup>1</sup>/<sub>4</sub>" mark

Double Stick tape

Diagram 6

